



GentleBOX JA - 318 MIMO

GentleBOX JA-318 MIMO contains integrated dual-polarized panel antenna with overvoltage protection and gilded layout guarantees a long life time. This antenna is optimal solution for the clients at the frequency band 2.4 GHz for a long distance.

Electrical parameters:

Frequency range	2.36 – 2.485 GHz
Gain	16.5 ± 0.8 dBi
VSWR	≤ 1.8
Beamwidth _{-3 dB}	22°/22°
Port isolation	30 dB
Polarization	vertical and horizontal

Mechanical parameters:

Connector on cable	UF-L, MMCX or R-SMA
Material	UV stabilized plastic ABS, Polyamide
Installation for mast	ø 27 - 74 mm
Inner size	309 x 309 x 88 mm
Outer size	326 x 326 x 113 mm

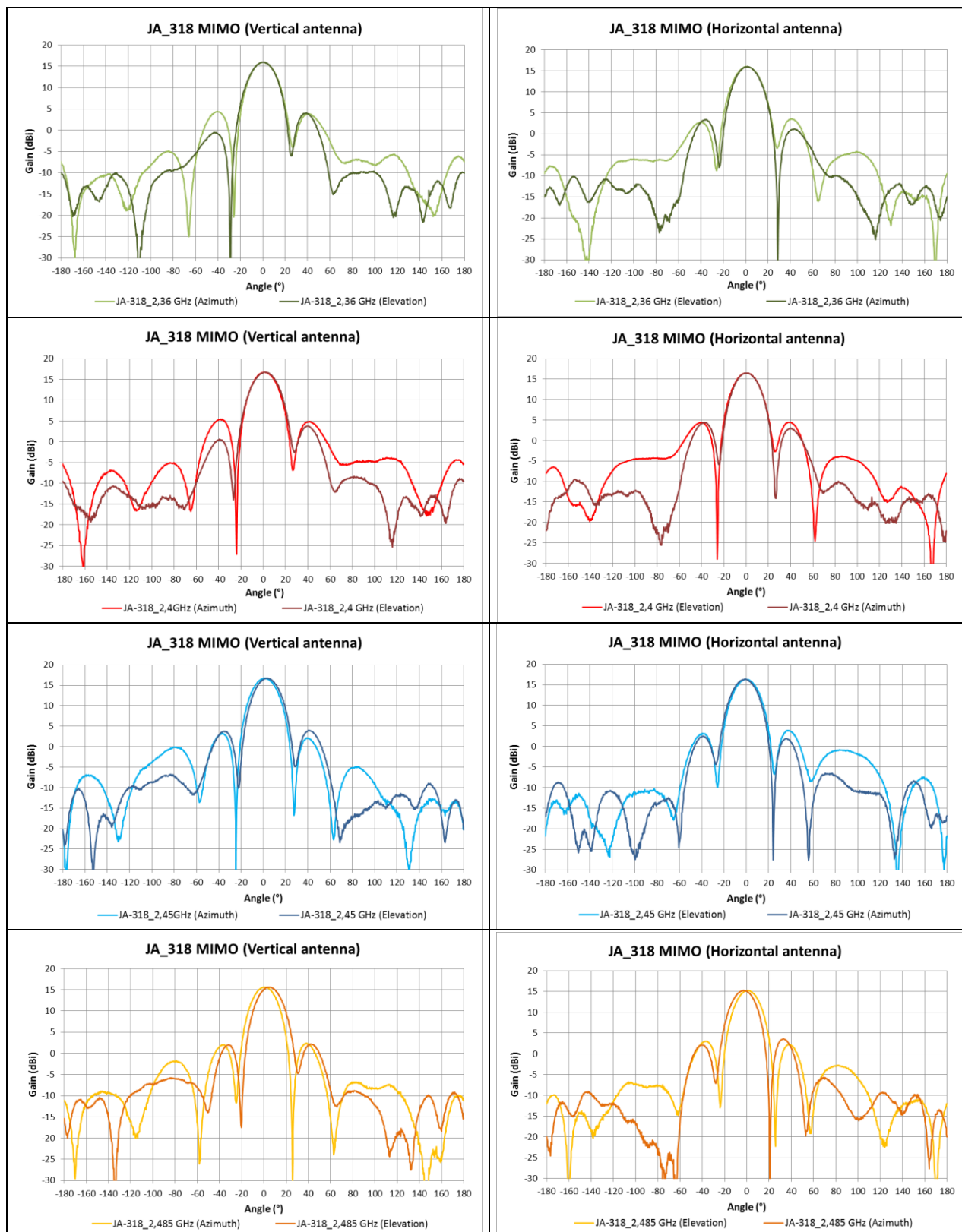
GentleBOX is inclusive outdoor box for AP, RouterBOARDS and other electronics which contains unique system of the grooves and holes for easy installation of the most common types of the routerboards. GentleBOX is prearranged for simplified mounting of RB411, RB433, RB800, ALIX2, ALIX3, Compex, Wispstation and Rocket M2 with GentleClip. You require flat and 2 cross-shaped (PH1 and PH2) screwdrivers and the spanner "13" for complete installation.

Package:

- Include the bracket for mast
- Blue bayonet locks for easy closure which never lose
- Cable gland M20 for cable ø 4 - 10 mm, it is possible put through the RJ45
- Screws and plastic distance piers for easy installation of the electronics
- Package dimensions – 350 mm x 380 mm x 140 mm

GentleBOX JA - 318 MIMO

The radiation pattern:



Contact: Jirous spol. s r.o. (Ltd.)

Nad Krocínkou 46, 190 00 Praha 9, Czech Republic

info@jirous.com

GentleBOX JA - 318 MIMO

Outline:



Fig. 1 GentleBOX JA – 318 MIMO - design



Fig. 2 Options of the tilt the antenna



GentleBOX JA - 318 MIMO



Fig. 3 Options the mounting of the bracket

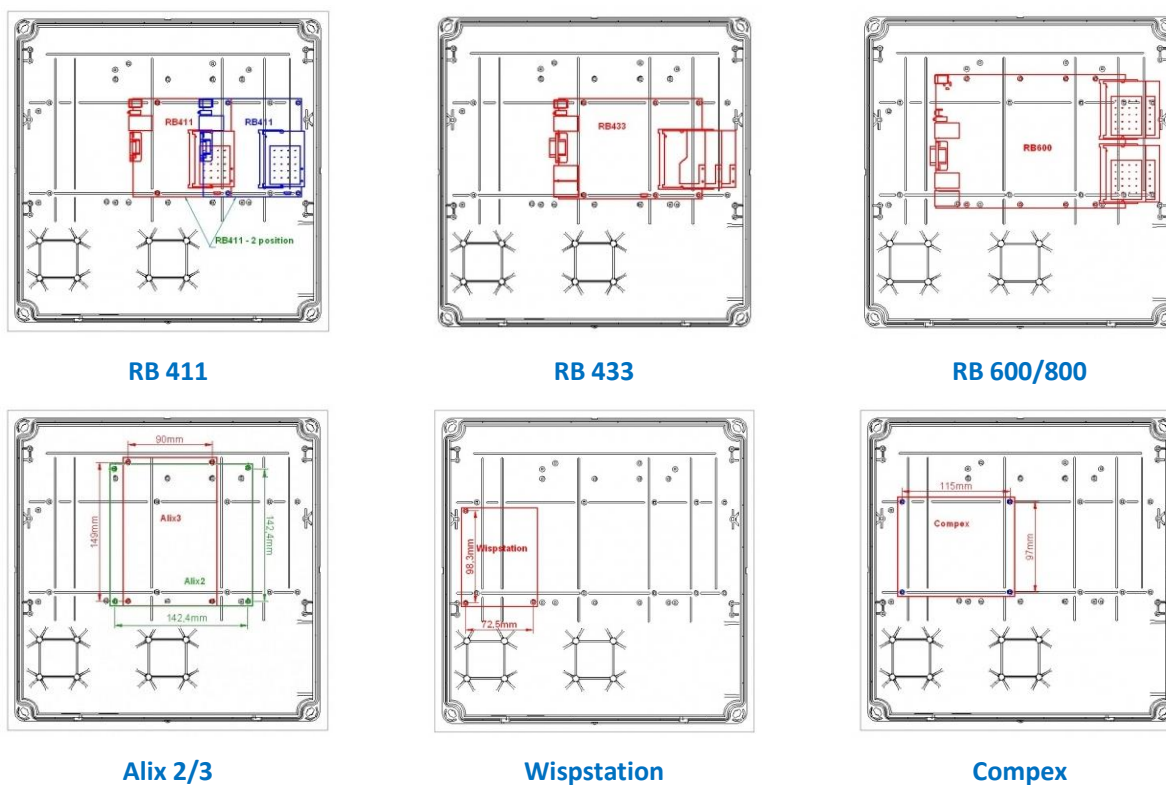


Fig. 4 Placement of RouterBoards for easy assembly