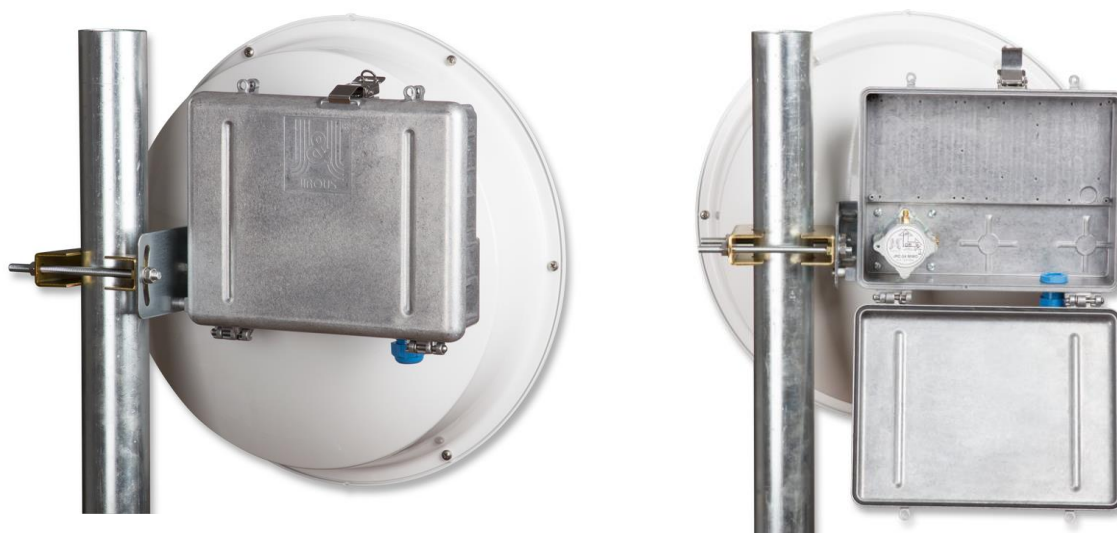


GentleBOX JR-250 Alu

Technical parameters:

Inner size	246 x 185 x 61/50 mm
Material	Aluminum alloy with high corrosion protection
Weight	1.5 kg (3.3 lbs)
Package size/weight	285 x 285 x 95 mm / 1.7 kg (3.7 lbs)



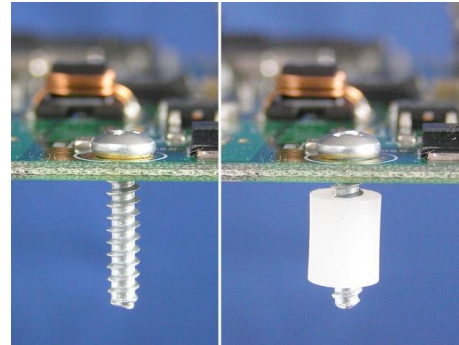
Specification:

- **GentleBOX JR-250 Alu** is the ideal box for installation of electronics, in use with parabolic antennas JRC-xx MIMO and JRB-xx MIMO
- metal body ensures **resistance against interferences, high resistance against lightning and water**
- the package includes a cable gland, which prevents spinning by specially molded retaining lines
- **cable gland M20** for cables \varnothing 4 - 10 mm to easy put through the RJ45 connector
- possibility to use up to 10 cable glands (centres for drilling the holes are marked)
- Ready for easy installation Mikrotik RouterBoards **RB 411, RB911, RB912, RB433, RB493**, others by metal sheet (not included in package)

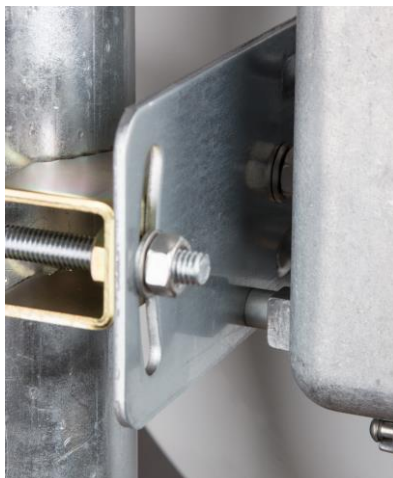
GentleBOX JR-250 Alu



Hinge with end stop for cable glands protection

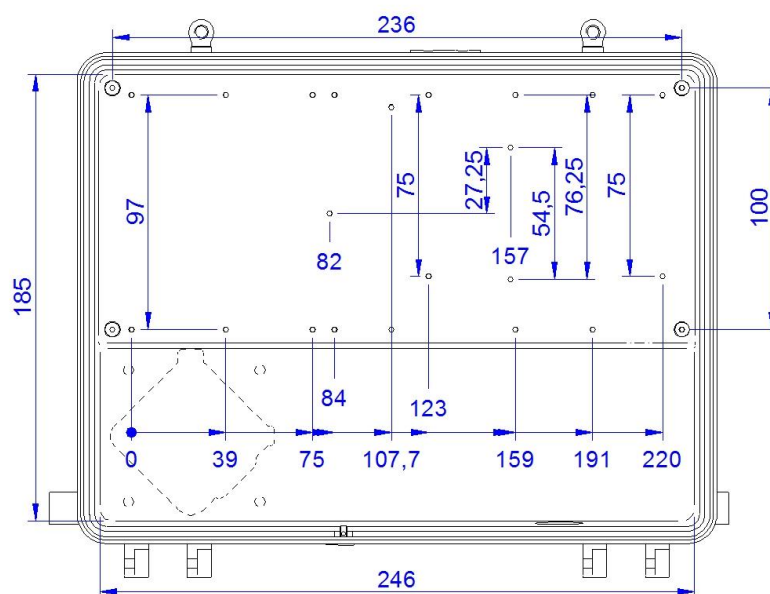
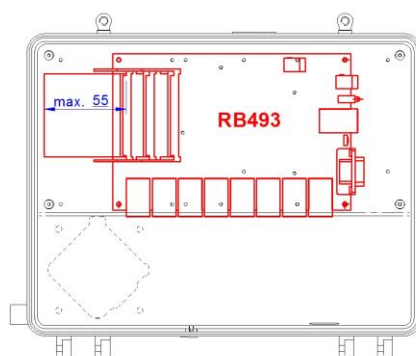
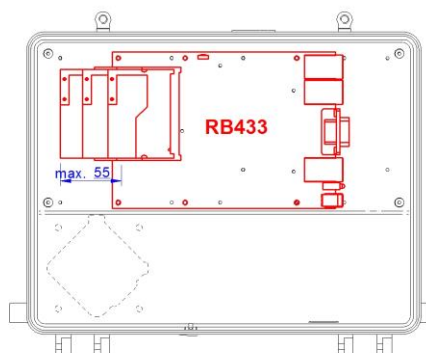
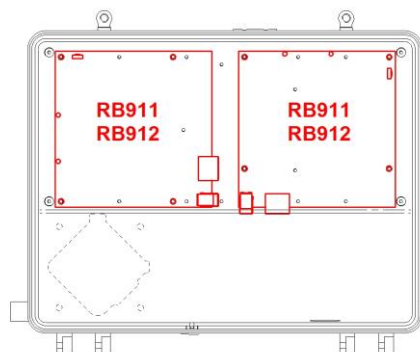
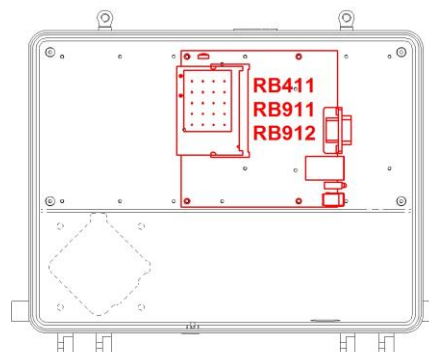


Assembling screws and plastic self-hold distance tubes (8/8 pcs)



Added side screw for rigid assembling with antenna

GentleBOX JR-250 Alu



GentleBOX JR-250 Alu

Ordering code:

JE – 250 L2C

JE – mast installation box
JR – JRC-xx and JRB-xx MIMO antennas box

L – lock by latch
S – lock by screws

250 – box size

only JE-250
C – hose clip installation
T – bracket installation

2 – the number of cable glands

Available models:



JR-250 S1

lock by **non-lose screws**, one cable gland



JR-250 L1

lock by **latch**, one cable gland

JR-250 S4

lock by **non-lose screws**, four cable glands

JR-250 L4

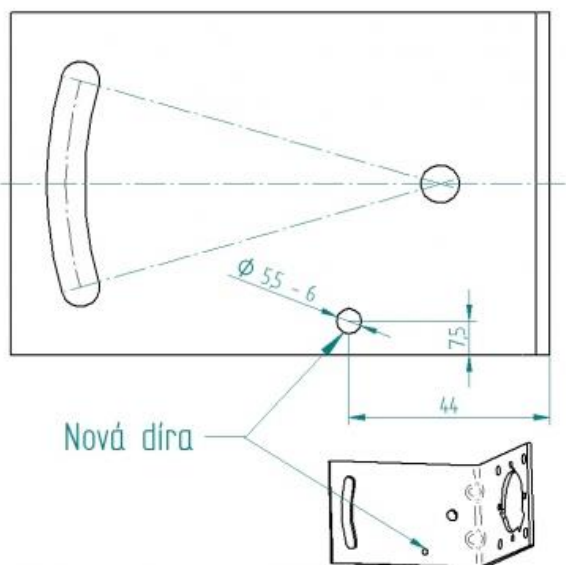
lock by **latch**, four cable glands

- Other models on request

GentleBOX JR-250 Alu

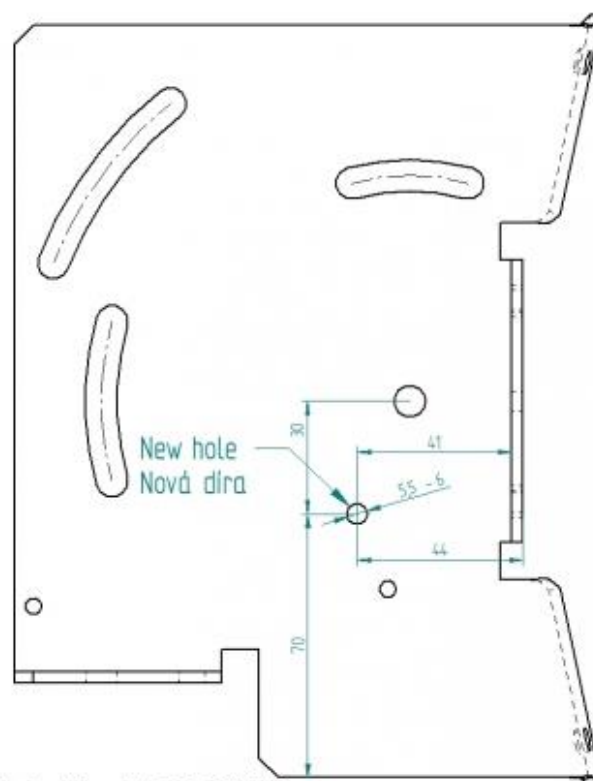
Antenna installation with older bracket model:

- drill the hole with $\varnothing 5.5 - 6$ mm (or can be bought a new bracket with the hole)



Hole in old bracket JRC-24 / EX
for assembling with GentleBox JR-250 Alu

Úprava staršího držáku JRC-24 / EX
pro montáž GentleBoxu JR-250 Alu



Hole in old bracket JRC-29 / EX
for assembling with GentleBox JR-250 Alu

Úprava staršího držáku JRC-29 / EX
pro montáž GentleBoxu JR-250 Alu

GentleBOX JR-250 Alu

Suitable for:

- Parabolic antenna JRC-24
- Parabolic antenna JRC-24 MIMO
- Parabolic antenna JRC-24 EXTREM
- Parabolic antenna JRC-24 EX MIMO
- Parabolic antenna JRC-29
- Parabolic antenna JRC-29 MIMO
- Parabolic antenna JRC-29 EXTREM
- Parabolic antenna JRC-29 EX MIMO

GentleBOX JR-250 Alu

Photo gallery:

